

SEA&LAND ELECTRONIC CORP.

13F.,No.120-10,
 Sec.3,Zhongshan Rd.,Zhonghe City,Taipei County,
 Taiwan, R.O.C.
 Tel.: 886-2-8221-2567
 Fax.: 886-2-2225-7268

Techfuse
PTC Devices
 Resettable Fuse

PRODUCT: HPD900
 DOCUMENT: QR0429
 ECN. NO.:
 REV LETTER:
 REV DATE: 2010/7/1
 PAGE NO.: 1 of 1

Specification Sheet

Insulating Material:
 meets UL94 V-0 Requirements
 Lead-free, meets RoHS

Lead Material:
 Nickel
 0.3mm nominal thickness

Marking:

- Sea & Land Logo
- SL H900** - Part identification
- XXXX - Lot identification

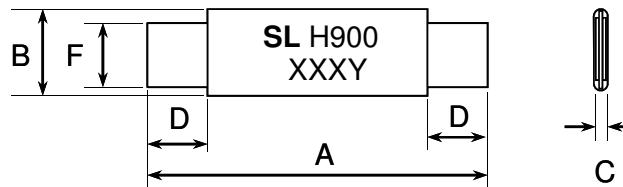


TABLE I. DIMENSIONS:

	A		B		C		D		F	
	MIN	MAX	MIN	MAX	MIN	MAX	MIN	MAX	MIN	MAX
mm	45.4	47.6	7.9	8.5	0.9	1.3	4.6	6.2	5.9	6.1
in	1.79	1.87	0.31	0.33	0.04	0.05	0.18	0.24	0.23	0.24

TABLE II. PERFORMANCE RATINGS:

Model	V _{max} (Vdc)	I _{max} (A)	I _{hold} @25°C (A)	I _{trip} @25°C (A)	P _d Typ. (W)	Maximum Time To Trip		Resistance		
						Current (A)	Time (Sec)	R _{i min} (Ω)	R _{i max} (Ω)	R _{1 max} (Ω)
HPD900	20	100	9.00	16.7	3.8	45.00	5.0	0.006	0.010	0.014

Ordering Information

Packing

HPD	900	S	Bag Q'ty
Product name	Hold Current (A)	S= Single slitted lead Blank = Standard	HPD900 200 pieces / bag

Recognition: UL / TÜV , pending.